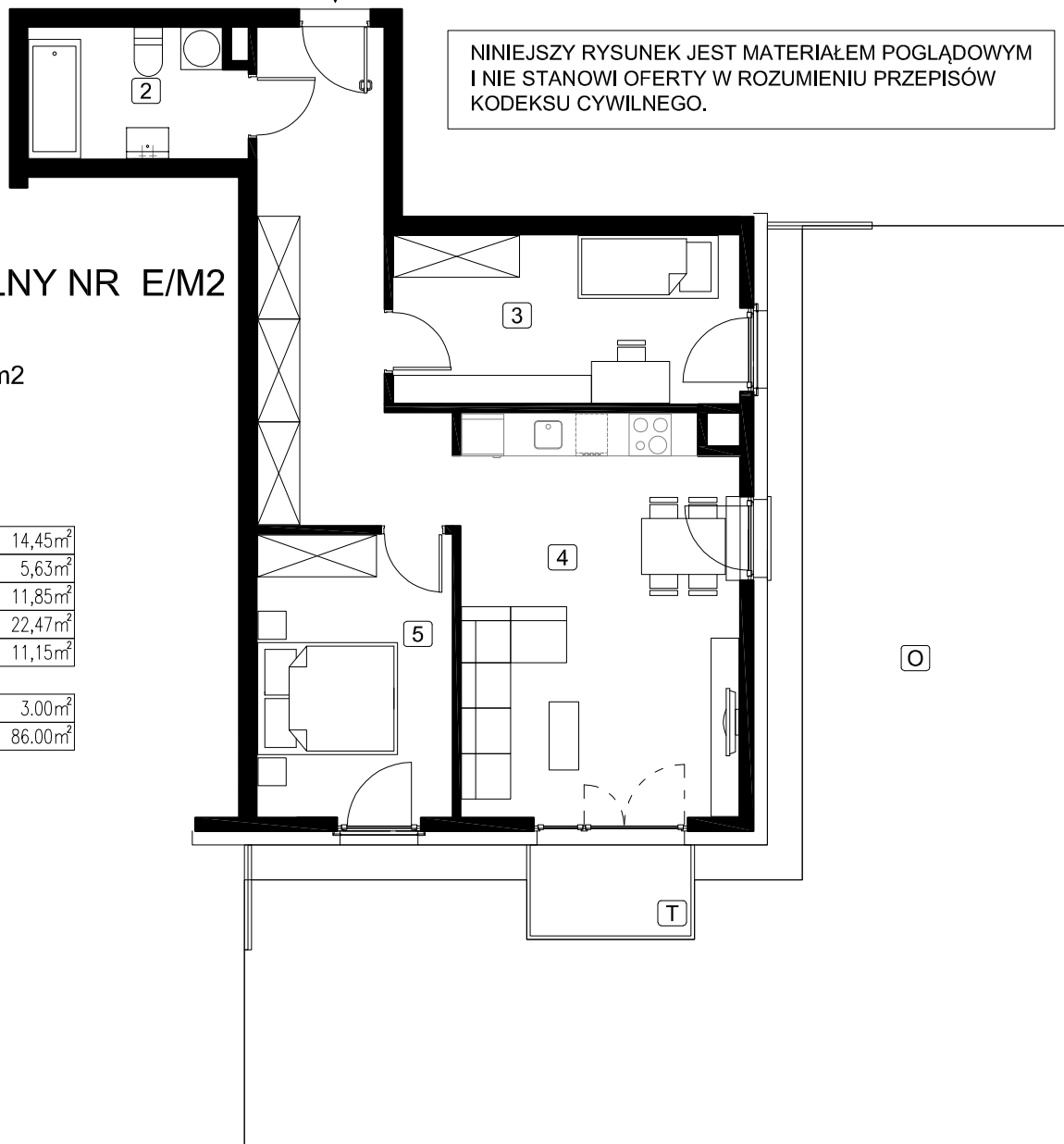
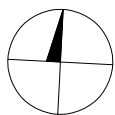


E/M2



## LOKAL MIESZKALNY NR E/M2

BUDYNEK E  
 POWIERZCHNIA : 65,55 m<sup>2</sup>  
 PARTER

|   |                     |                     |
|---|---------------------|---------------------|
| 1 | HOL                 | 14,45m <sup>2</sup> |
| 2 | ŁAZIENKA            | 5,63m <sup>2</sup>  |
| 3 | POKÓJ               | 11,85m <sup>2</sup> |
| 4 | P.DZIENNY Z ANEKSEM | 22,47m <sup>2</sup> |
| 5 | POKÓJ               | 11,15m <sup>2</sup> |
| T | TARAS               | 3,00m <sup>2</sup>  |
| O | OGRÓDEK             | 86,00m <sup>2</sup> |

RZUT KONDYGNACJI PARTERU



ZAGOSPODAROWANIE TERENU

