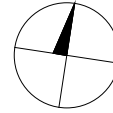
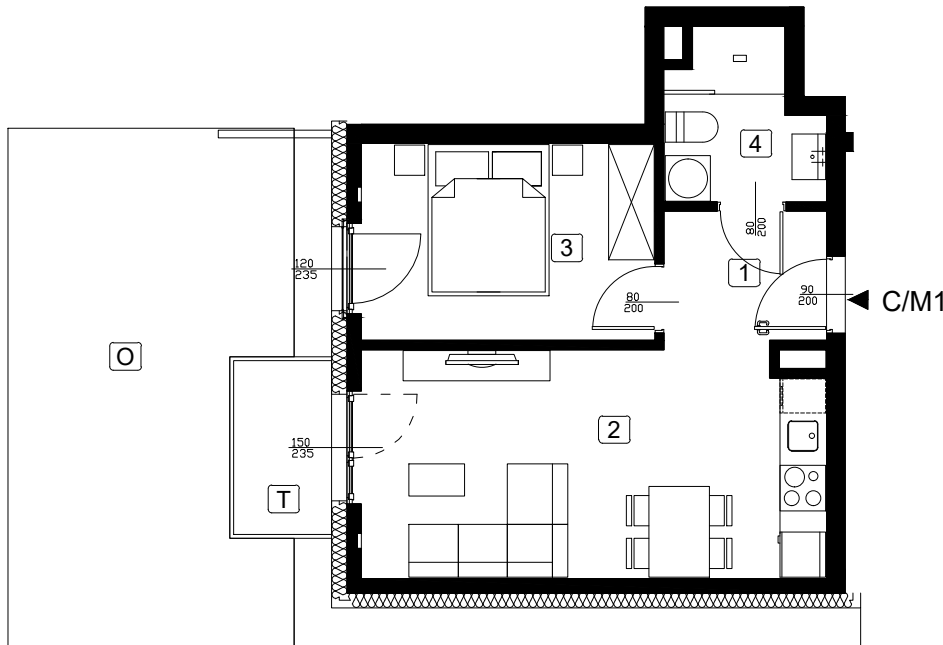


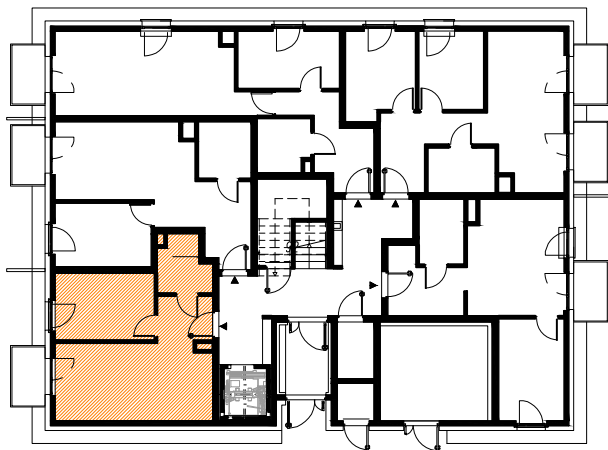
# LOKAL MIESZKALNY NR C/M1

BUDYNEK C  
POWIERZCHNIA : 35,82 m<sup>2</sup>  
PARTER



1	HOL	3,77m <sup>2</sup>
2	P.DZIENNY Z ANEKSEM	18,09m <sup>2</sup>
3	POKÓJ	9,95m <sup>2</sup>
4	ŁAZIENKA	4,01m <sup>2</sup>
T	TARAS	3,00m <sup>2</sup>
O	OGRÓDEK	26,00m <sup>2</sup>

RZUT KONDYGNACJI PARTERU



ZAGOSPODAROWANIE TERENU

