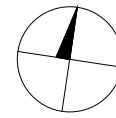
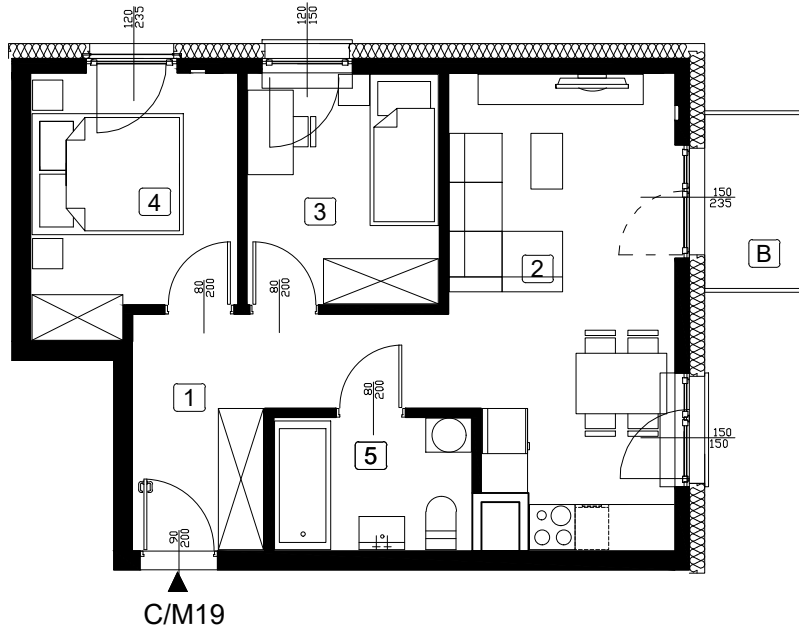


# LOKAL MIESZKALNY NR C/M19

BUDYNEK C

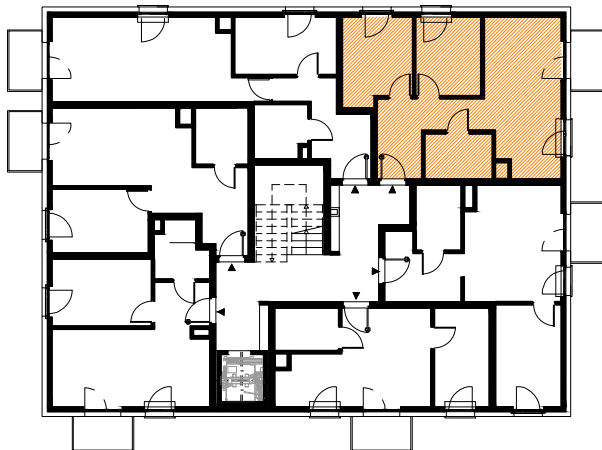
POWIERZCHNIA : 46,71 m<sup>2</sup>

PIĘTRO 3



|   |                     |                     |
|---|---------------------|---------------------|
| 1 | HOL                 | 8,33m <sup>2</sup>  |
| 2 | P.DZIENNY Z ANEKSEM | 17,38m <sup>2</sup> |
| 3 | POKÓJ               | 7,67m <sup>2</sup>  |
| 4 | POKÓJ               | 8,81m <sup>2</sup>  |
| 5 | ŁAZIENKA            | 4,52m <sup>2</sup>  |
| B | BALKON              | 3,00m <sup>2</sup>  |

RZUT KONDYGNACJI 3 PIĘTRA



ZAGOSPODAROWANIE TERENU

